



# The Pavilion

Performing Arts Centre Sutherland

Venue Hire  
Brochure 2025

# The Pavilion Performing Arts Centre Sutherland is a new performing arts theatre in the heart of southern Sydney

The fully refurbished space has been re-developed within the former Sutherland Entertainment Centre. It features a striking entrance foyer, better access for patrons, Proscenium Theatre with new seating and full theatre functionality.

The Pavilion features a state-of-the-art stage and flytower, orchestra pit, lighting, AV and sound equipment and a full suite of dressing rooms. It has a seating capacity of 686 over two levels and is an ideal space for a wide range of performances including theatre, live music, comedy and dance.

In addition, the venue comes with a variety of breakout spaces and meeting rooms available for hire. Review our entire offerings below.



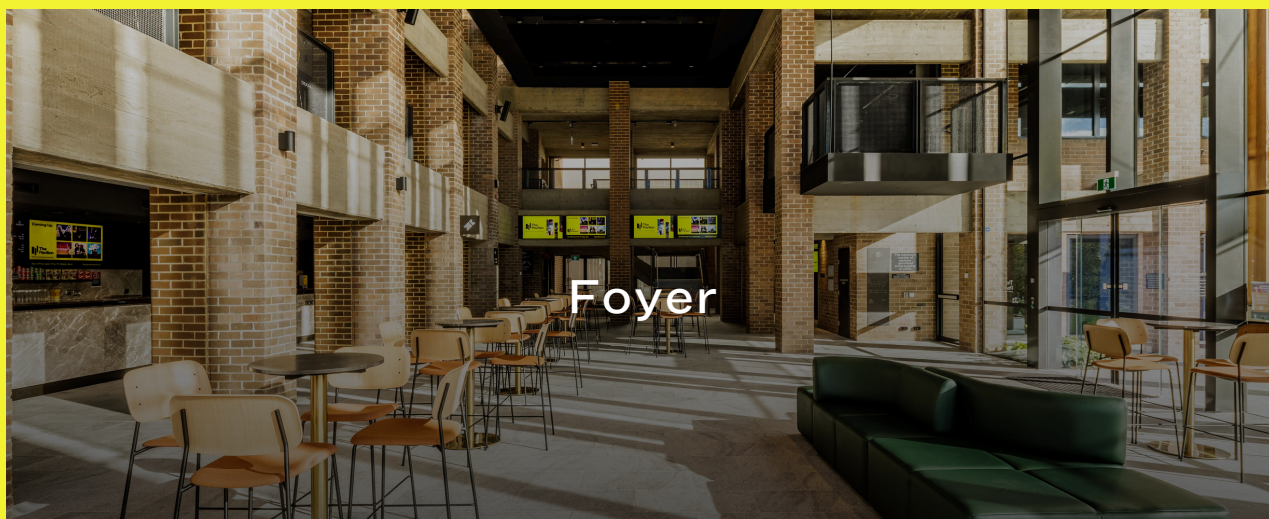
# Venue Overview



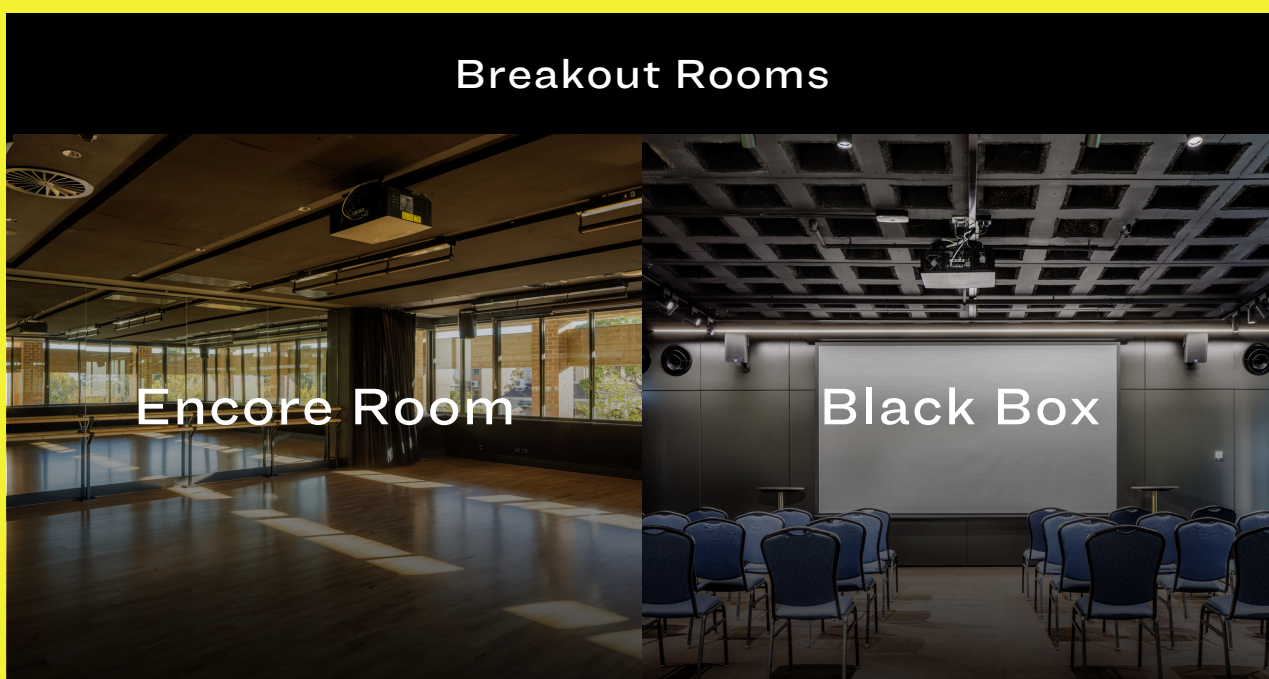
Click image to go directly to specific page



Theatre/Auditorium



Foyer



Breakout Rooms

Encore Room

Black Box

\*The fees, information, and charges listed in this venue hire brochure are applicable for the 2025 calendar year and are subject to change annually.

# Auditorium



# Pavilion Theatre Auditorium

## Key Features

Auditorium Capacity: 686 fixed theatre seats. Stalls (451 seats), Dress Circle (226 seats), Boxes and Viewing/Cry Room

Stage raised at the front of the Auditorium

Proscenium Opening

Fly Tower with overhead counterweight fly system rigging for scenery, lighting and curtains

Orchestra Pit recess in the front stalls, with seat wagons

Control Rooms, Sound Control Porch, Followspot Room

Performer and Musician facilities / Green Room

Back of House Technical facilities / Production Office

Patron Amenities for all abilities

Stage Door Security Entry

Loading Docks

Box Office, Cloak Room, Bars/Kiosks

Foyers on three levels including Terrace Bar

In-venue restaurant

In-house trained staff and technicians

## Front of House

Foyers with access from the street / dedicated drop off zone that accommodates buses

Accessible bathrooms / Family bathroom

Water refill stations

Foyers with double Sound / Light Lock

Entry doors to the Auditorium at each entry point

Foyers have two lifts to service all DDA access requirements

## Back of House

Seven dressing rooms which are all accessible and can accommodate up to 60 performers

Air conditioning to auditorium, foyers, dressing rooms, with isolation for stage smoke, haze and pyrotechnics.

Green Room with artist and staff recreation area, meeting area, kitchenette, and outdoor terrace at Level 1 with lift and stair access

Wardrobe Work Room and separate laundry with washing and drying facilities.

Stage Door Office / Security Station at the backstage entry to the theatre at Basement Level

Loading Dock with a Dock Leveller to take all-size vehicles with direct-level access to the Stage

## Auditorium

Fixed seating on two tiered levels for total of 686 patrons and wheelchair access

Viewing / Crying room at rear of stalls in Auditorium

Stalls have two internal aisles to allow for maximum seating and efficient access

High quality theatre seats with generous row spacing, with excellent sightlines

Accessible seats and Wheelchair spaces in multiple locations.

Removable seats on seat wagons forming two rows at the front of the Stalls that can be removed to make an Orchestra Pit with removable balustrades.

Access steps to provide ceremonial and production access between Stalls and Stage, and a DDA lift on the PS side for wheelchair access to Stage.

## Technical Specifications

Download the tech-specs guide [here](#) which outlines all relevant details across staging and rigging, lighting, sound & AV and back-of-house facilities.

Stage dimensions include:

- Proscenium Opening 13m x 7m
- Stage Width - Wall to Wall 23.5m
- Stage Width - Proscenium edge to wall PS 5.5m
- Stage Width – Proscenium edge to Counterweight Lock Rail OP 4m
- Stage Depth – Forestage Edge to Rear Wall 11.4m
- Stage Depth (Fly Tower) – Proscenium to Rear Wall 10m
- Stage Height 1m above Stalls

## Pricing Breakdown

Please see full Auditorium Hire fees on P6. For specific enquiries or bespoke events, please contact The Pavilion team.

Each full day hire of the Auditorium includes the exclusive use of all Auditorium features listed, as well as allocated hours of in-house staffing support. It also includes access to dressing rooms, venue Wi-Fi and laundry facilities.

Please note that costs outlined are exclusively for venue hire only and do not include fees associated with technical production, staffing, catering, additional styling/set-dressing, or any other miscellaneous charges.

For full venue rate schedule, download [here](#).

# Pavilion Auditorium Pricing Breakdown

## Commercial Hires (GST inclusive)

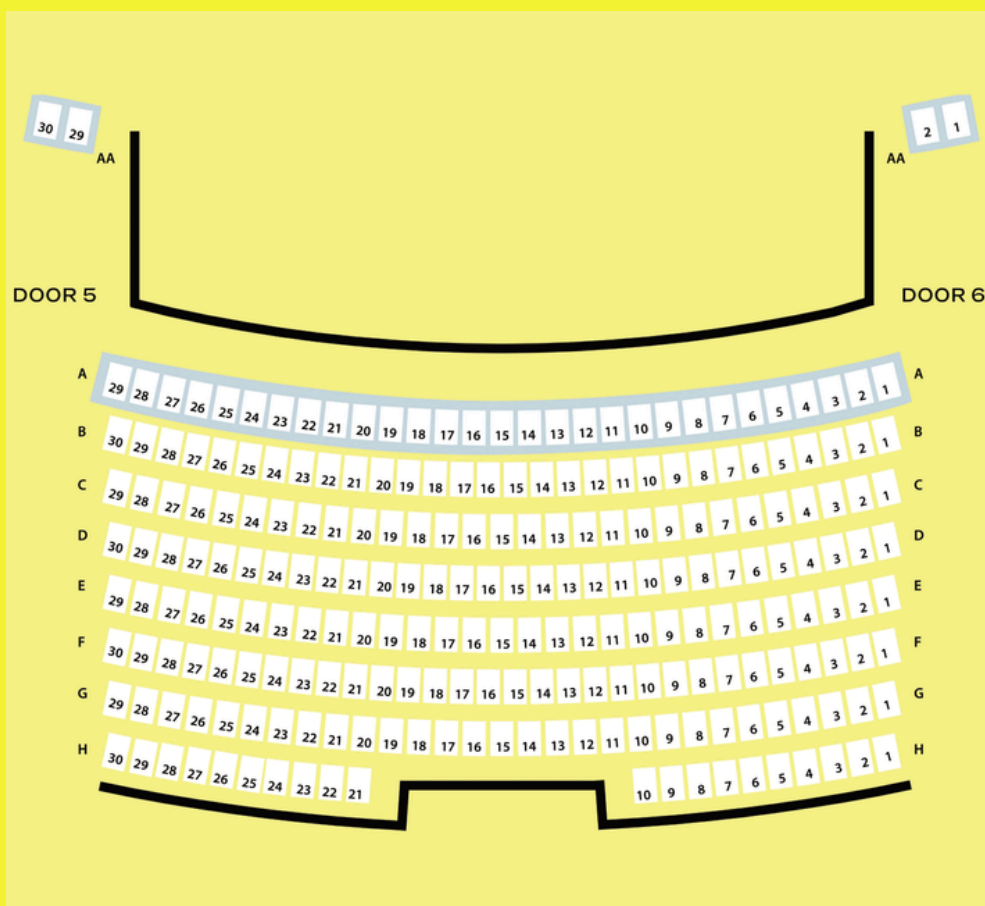
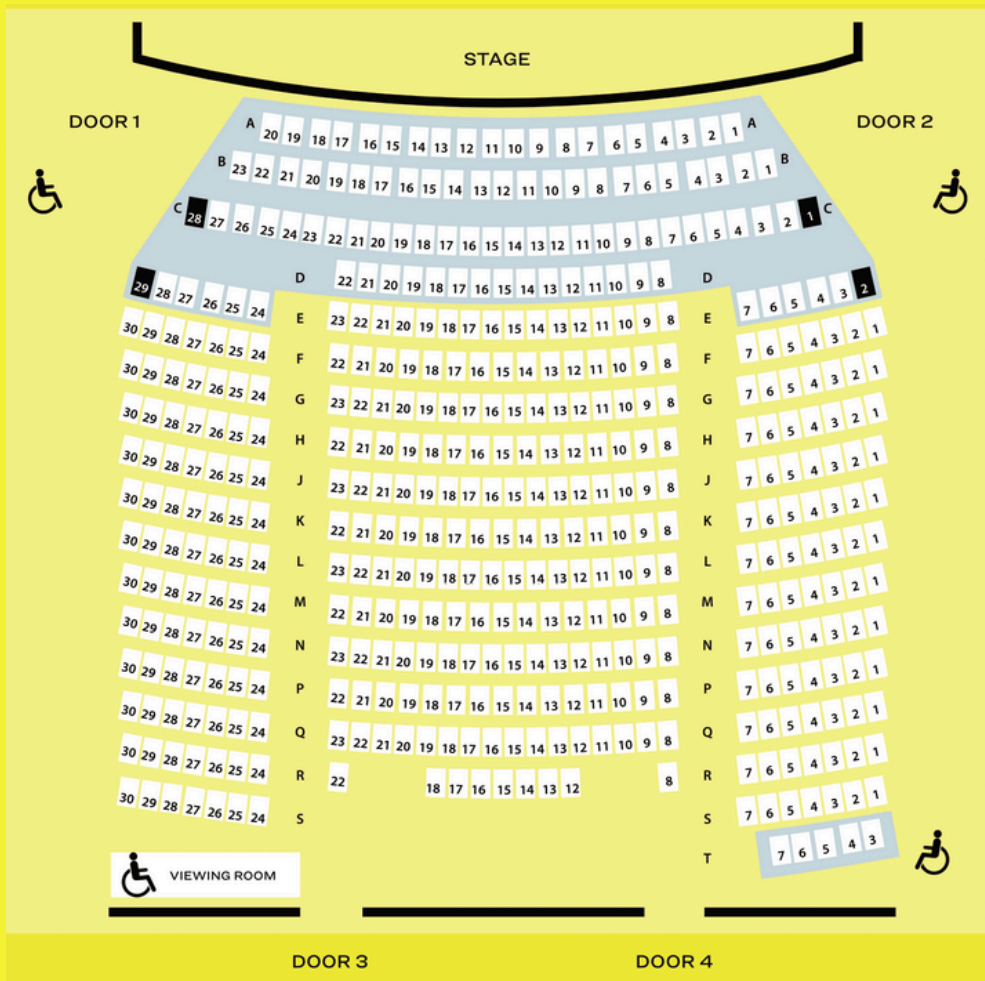
Hire*	Mon-Thurs	Friday-Sunday		Public Holidays
		Jan-Oct	Nov-Dec	
Part-Day (Up to 4 hours)	\$3,015	\$3,590	\$4,355	\$5,220
Full Day (4-10 hours)	\$4,060	\$4,865	\$5,795	\$6,940
Extra Hours (per hour)	\$400	\$525	\$525	\$700

## Community & Not-for-Profit Hirers (GST inclusive)

Hire	Mon-Thurs	Friday-Saturday		Sunday		Public Holidays
		Jan-Oct	Nov-Dec	Jan-Oct	Nov-Dec	
Part-Day (Up to 4 hours)	\$1,895	\$3,490	\$4,235	\$2,260	\$2,735	\$5,075
Full Day (4-10 hours)	\$2,550	\$4,735	\$5,638	\$3,055	\$3,640	\$6,750
Extra Hours (per hour)	\$255	\$515	\$515	\$330	\$330	\$680

\*Please note that additional performance fees apply if you are holding more than one performance per day.

# Seating Maps



Wheelchair Space

Step Free Area

# Auditorium Images

Dress Circle View



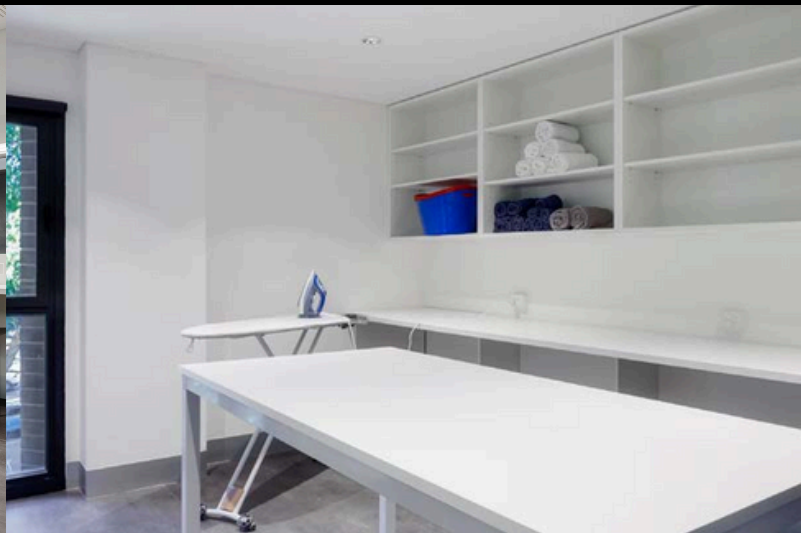
Stalls View



Dressing Rooms



Wardrobe / Laundry



Stage Door



Viewing / Cry Room



# Foyer



# Pavilion Foyer

## Key Features

Built atop the former Sutherland Entertainment Centre structure with natural timber and brick design.

Stunning high glass ceiling with abundant natural light

Park views and overflow to Peace Park

Multiple function layout options and breakout spaces

Venue furniture & styling

AV, staging and display options

Fully operational bar

Bespoke catering options

## Capacity

Cocktail: 200-300

Seated/Conference: 100-200

## Ideal For

Formal events and galas

Conferences and networking events

Weddings

Corporate entertaining

Awards ceremonies and launch parties

Filming & photography

AGMs & other meetings

Trade shows

Exhibitions & bespoke entertainment events

## Layout Options

Cocktail: high tables, limited seating

Standing only: all furniture removed

Exhibition: trestle tables with two seats per table

Theatre: rows of seating

## Equipment Hire (additional charges may apply)

Lectern

Microphones / PA system and audio equipment

Staging / Podiums

On-stage or freestanding TV screens

Data projector and screen

Presentation foyer screens

## Pricing Breakdown\*

Commercial / NFP

Mon-Fri	Day Rate	\$1,100 / \$705
	4-Hour Rate	\$815 / \$530
	Extra Hours	\$200 / \$175
Sat-Sun	Day Rate	\$1,970 / \$1,320
	4-Hour Rate	\$1,015 / \$910
	Extra Hours	\$355 / \$215
Public Holiday	Day Rate	\$3075 / \$2,310
	4-Hour Rate	\$1615 / \$1,200
	Extra Hours	\$535 / \$345

## Additional Costs to Consider\*

Staffing (incl. technicians, duty managers, bar staff), food & beverage, bespoke styling/set-up, additional staffing fees.

## Box Office



## Foyer Bar



## Merchandise Area

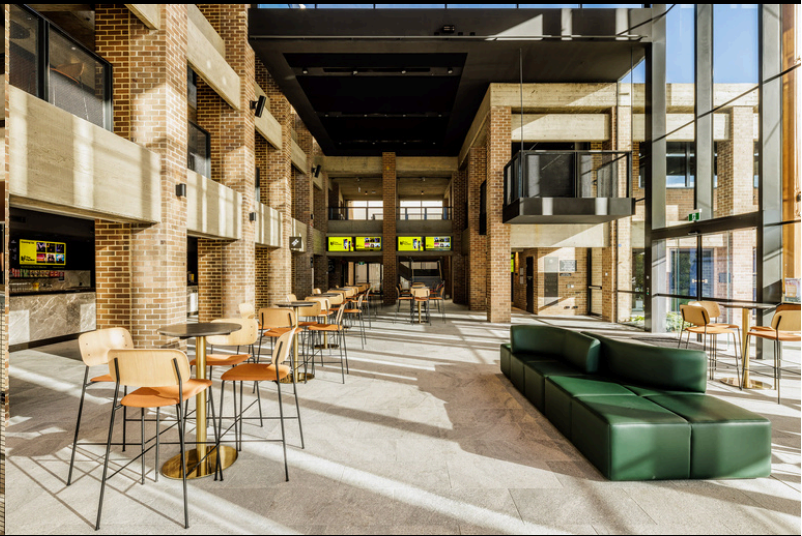


# Foyer Images

Mezzanine View



Ground Floor



Bar Facilities



Foyer Seating



Cocktail Event



Bespoke Events



**Black Box**



**BLACK BOX**

# Black Box Meeting Room

## Key Features

Fantastic conference/meeting room in prime central location in Sutherland

Room Dimensions: 7.2m x 10.2m

Ground Floor Access through main foyer

Fully enclosed space with blackout shades for privacy

Inbuilt projector with screen and audio (plug and play)

## Capacity

Cocktail: 30-40

Seated: Up to 40

## Ideal For

Meetings

Seminars / Workshops

Casual corporate events

Auctions

Staff training sessions

Additional Event Space

## Layout Options

Cocktail: high tables, limited seating

Standing only: all furniture removed

Exhibition: trestle tables with two seats per tables

Theatre: rows of seating

Classroom or Cabaret: separated tables/chairs

U-Shaped: U-shaped arrangement with tables/chairs

Board Room: large singular table arrangement

## Equipment Hire (additional charges may apply)

Lectern

Microphones / PA system and audio equipment

Staging / Podiums

On-stage or freestanding TV screens

Additional Presentation screens

## Pricing Breakdown\*

Commercial / NFP

Mon-Fri	Day Rate	\$712	/ \$460
	4-Hour Rate	\$525	/ \$340
	Extra Hours	\$130	/ \$85
Sat-Sun	Day Rate	\$840	/ \$565
	4-Hour Rate	\$712	/ \$425
	Extra Hours	\$215	/ \$140
Public Holiday	Day Rate	\$1390	/ \$1390
	4-Hour Rate	\$1210	/ \$780
	Extra Hours	\$300	/ \$130

## Additional Costs to Consider\*

Staffing (incl. technicians, duty managers, bar staff), food & beverage, bespoke styling/set-up, additional staffing fees.

Each hire of The Black Box includes exclusive use of the room, as well as the PA System, Projector and Screen and Venue Wi-Fi.

Cocktail Seating



Ground Floor Access



Theatre Styled Seating



# Encore Room



# Encore Room

## Key Features

State of the art creative space

Room Dimensions: 9.9m x 9.6m

Equipped with sprung hardwood dance floors

Ballet bar with one wall lined with floor to ceiling mirrors

Natural light and closed blind options

Inbuilt projector with screen and audio (plug and play)

## Capacity

Cocktail: 30-40

Seated: Up to 75

## Ideal For

Dance rehearsals/classes

Exercise classes i.e. Yoga, Physie

Creative rehearsal space

Seminars / Workshops

Casual corporate events

Auctions

Staff training sessions

Webinar Hosting

## Layout Options

Cocktail: high tables, limited seating

Standing only: all furniture removed

Exhibition: trestle tables with two seats per tables

Theatre: rows of seating

Classroom or Cabaret: separated tables/chairs

U-Shaped: U-shaped arrangement with tables/chairs

Board Room: large singular table arrangement

## Equipment Hire (additional charges may apply)

Lecturn

Microphones / PA system and audio equipment

Staging / Podiums

On-stage or freestanding TV screens

Data projector and screen

Presentation foyer screens

## Pricing Breakdown\*

Commercial / NFP

Mon-Fri	Day Rate	\$712	/ \$460
	4-Hour Rate	\$525	/ \$340
	Extra Hours	\$130	/ \$85
Sat-Sun	Day Rate	\$840	/ \$565
	4-Hour Rate	\$712	/ \$425
	Extra Hours	\$215	/ \$140
Public Holiday	Day Rate	\$1390	/ \$1390
	4-Hour Rate	\$1210	/ \$780
	Extra Hours	\$300	/ \$130

## Additional Costs to Consider\*

Staffing (incl. technicians, duty managers, bar staff), food & beverage, bespoke styling/set-up, additional staffing fees.

Each hire of The Encore Room includes exclusive use of the room, as well as the PA System, Projector and Screen and Venue Wi-Fi.



Ready to make a booking?  
Contact our helpful team and get  
your event in the diary today.

For all venue hire enquiries or technical specs, contact:

E - [info@thepavilionarts.au](mailto:info@thepavilionarts.au)

P - 02 9063 2007

