



The Pavilion

Performing Arts Centre Sutherland

Venue Hire
Brochure

The Pavilion Performing Arts Centre Sutherland is a new performing arts theatre in the heart of southern Sydney

The fully refurbished space has been re-developed within the former Sutherland Entertainment Centre. It features a striking entrance foyer, better access for patrons, Proscenium Theatre with new seating and full theatre functionality.

The Pavilion features a state-of-the-art stage and flytower, orchestra pit, lighting, AV and sound equipment and a full suite of dressing rooms. It has a seating capacity of 686 over two levels and is an ideal space for a wide range of performances including theatre, live music, comedy and dance.

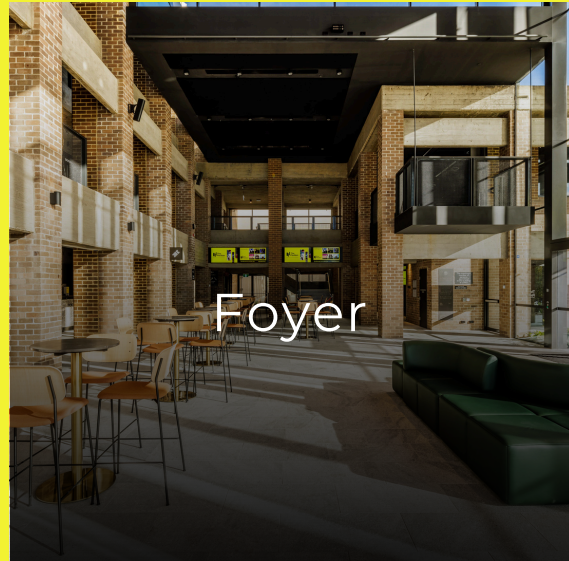
In addition, the venue comes with a variety of breakout spaces and meeting rooms available for hire. Review our entire offerings below.



Venue Overview



Click image to go directly to specific page



*The fees, information, and charges listed in this venue hire brochure are applicable for the 2024 calendar year and are subject to change annually.

Auditorium



Pavilion Auditorium

Key Features

Auditorium Capacity: 686 fixed theatre seats. Stalls (451 seats), Dress Circle (226 seats), Boxes and Viewing/Cry Room

Stage raised at the front of the Auditorium

Proscenium Opening

Fly Tower with overhead counterweight fly system rigging for scenery, lighting and curtains

Orchestra Pit recess in the front stalls, with seat wagons

Control Rooms, Sound Control Porch, Followspot Room

Performer and Musician facilities / Green Room

Back of House Technical facilities / Production Office

Patron Amenities for all abilities

Stage Door Security Entry

Loading Docks

Box Office, Cloak Room, Bars/Kiosks

Foyers on three levels including Terrace Bar

In-venue restaurant

In-house trained staff and technicians

Front of House

Foyers with access from the street / dedicated drop off zone that accommodates buses

Accessible bathrooms / Family bathroom

Water refill stations

Foyers with double Sound / Light Lock

Entry doors to the Auditorium at each entry point

Foyers have two lifts to service all DDA access requirements

Back of House

Seven dressing rooms which are all accessible and can accommodate up to 60 performers

Air conditioning to auditorium, foyers, dressing rooms, with isolation for stage smoke, haze and pyrotechnics.

Green Room with artist and staff recreation area, meeting area, kitchenette, and outdoor terrace at Level 1 with lift and stair access

Wardrobe Work Room and separate laundry with washing and drying facilities.

Stage Door Office / Security Station at the backstage entry to the theatre at Basement Level

Loading Dock with a Dock Leveller to take all-size vehicles with direct-level access to the Stage

Auditorium

Fixed seating on two tiered levels for total of 686 patrons and wheelchair access

Viewing / Crying room at rear of stalls in Auditorium

Stalls have two internal aisles to allow for maximum seating and efficient access

High quality theatre seats with generous row spacing, with excellent sightlines

Accessible seats and Wheelchair spaces in multiple locations.

Removable seats on seat wagons forming two rows at the front of the Stalls that can be removed to make an Orchestra Pit with removable balustrades.

Access steps to provide ceremonial and production access between Stalls and Stage, and a DDA lift on the PS side for wheelchair access to Stage.

Technical Specifications

Download the tech-specs guide here which outlines all relevant details across staging and rigging, lighting, sound & AV and back-of-house facilities.

Stage dimensions include:

- Proscenium Opening 13m x 7m
- Stage Width - Wall to Wall 23.5m
- Stage Width - Proscenium edge to wall PS 5.5m
- Stage Width – Proscenium edge to Counterweight Lock Rail OP 4m
- Stage Depth – Forestage Edge to Rear Wall 11.4m
- Stage Depth (Fly Tower) – Proscenium to Rear Wall 10m
- Stage Height 1m above Stalls

Pricing Breakdown

Please see full Auditorium Hire fees on P6. For specific enquiries or bespoke events, please contact The Pavilion team.

Each full day hire of the Auditorium includes the exclusive use of all Auditorium features listed, as well as allocated hours of in-house staffing support. It also includes access to dressing rooms, venue Wi-Fi and laundry facilities.

Additional Costs to Consider

Staffing (incl. technicians, duty managers, ushers)

Food & Beverage (for privately catered events)

Additional styling or set up

Public holiday charges or additional staffing hours

Pavilion Auditorium Pricing Breakdown

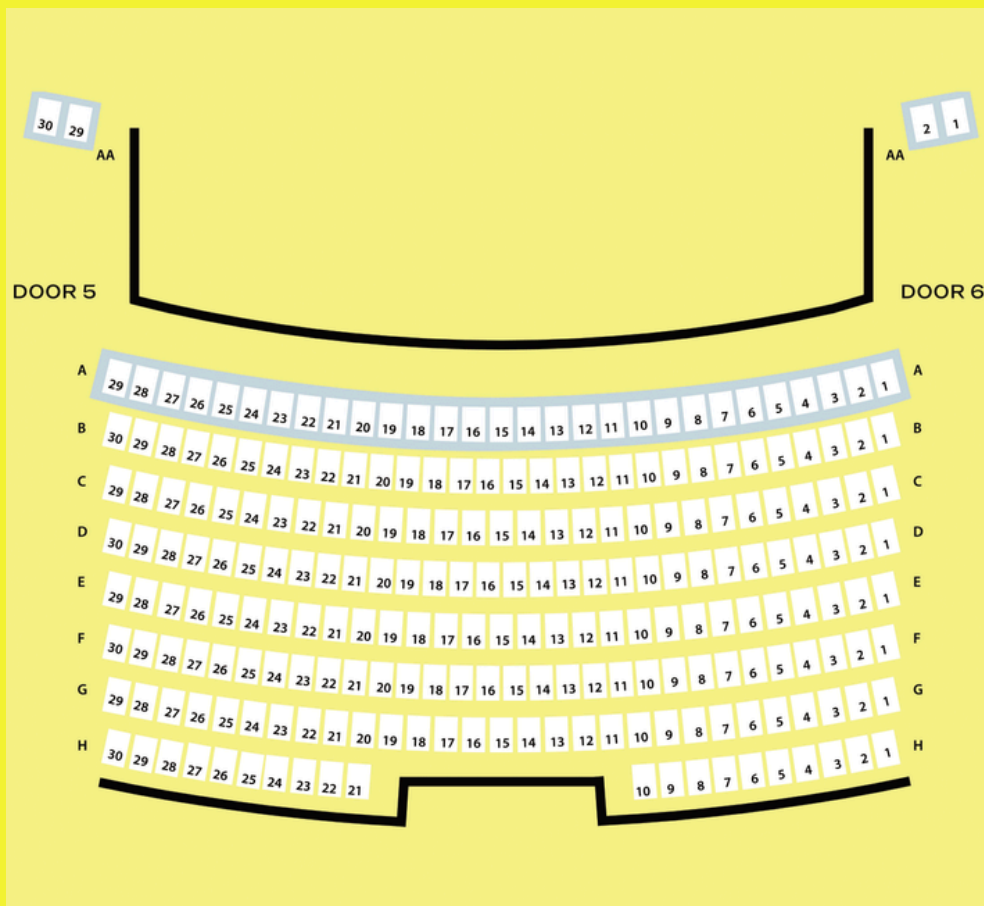
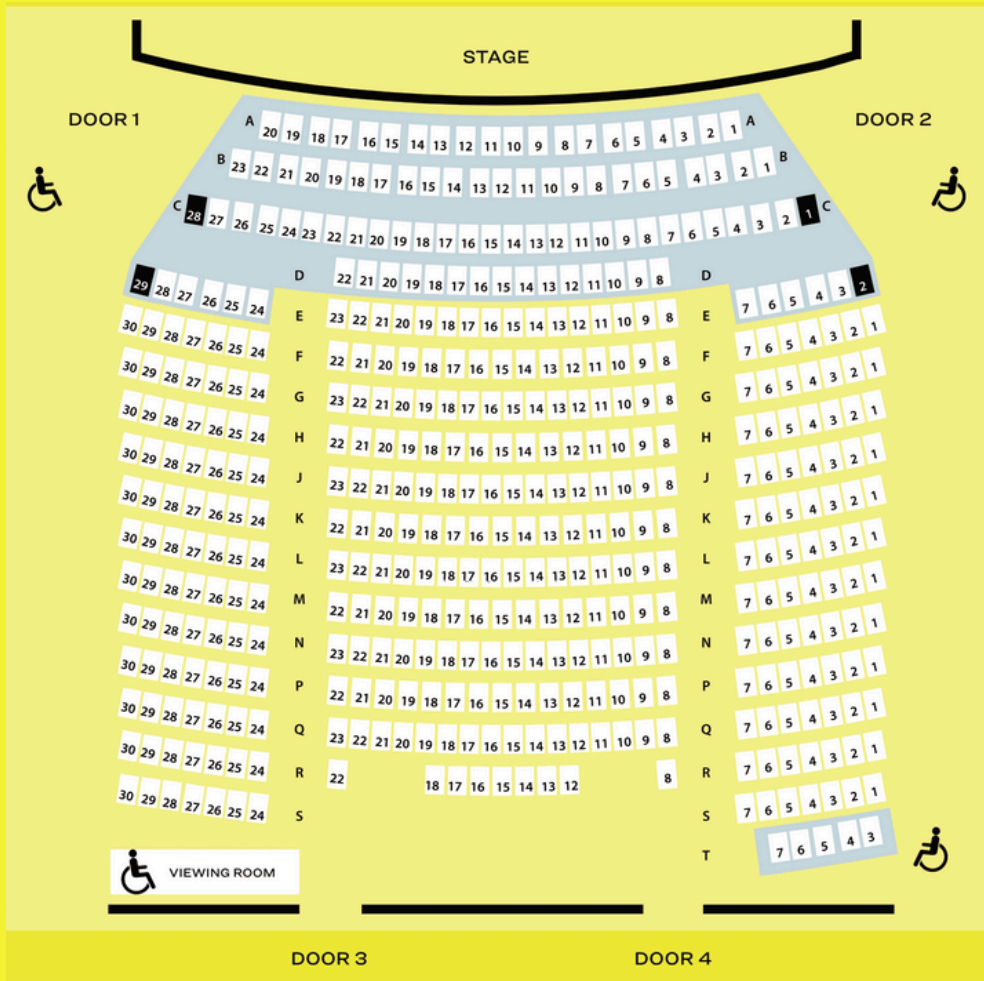
Commercial Hires (GST inclusive)

| Hire | Mon-Thurs | Friday-Sunday | | Public Holidays |
|---------------------------|-----------|---------------|---------|-----------------|
| | | Jan-Oct | Nov-Dec | |
| Day Rate (4-10 hours) | \$3,810 | \$4,570 | \$5,440 | \$6,515 |
| 4-Hour Hire | \$2,803 | \$3,370 | \$4,090 | \$4,900 |
| Extra Hours (per hour) | \$380 | \$495 | \$495 | \$655 |

Community & Not-for-Profit Hirers (GST inclusive)

| Hire | Mon-Thurs | Friday-Saturday | | Sunday | | Public Holidays |
|---------------------------|-----------|-----------------|---------|---------|---------|-----------------|
| | | Jan-Oct | Nov-Dec | Jan-Oct | Nov-Dec | |
| Day Rate (4-10 hours) | \$2,460 | \$4,570 | \$5,440 | \$2,950 | \$3,515 | \$6,515 |
| 4-Hour Hire | \$1,830 | \$3,370 | \$4,090 | \$2,180 | \$2,640 | \$4,900 |
| Extra Hours (per hour) | \$245 | \$495 | \$495 | \$320 | \$320 | \$655 |

Seating Maps



-  Wheelchair Space
-  Step Free Area

Auditorium Images

Dress Circle View



Stalls View



Dressing Rooms



Wardrobe / Laundry



Stage Door



Viewing / Cry Room



Foyer



The Pavilion

The Pavilion

The maximum number of persons permitted in the building is 1,000.

Pavilion Foyer

Key Features

Built atop the former Sutherland Entertainment Centre structure with natural timber and brick design.

Stunning high glass ceiling with abundant natural light

Park views and overflow to Peace Park

Multiple function layout options and breakout spaces

Venue furniture & styling

AV, staging and display options

Fully operational bar

Bespoke catering options

Capacity

Cocktail: 200-300

Seated/Conference: 100-200

Ideal For

Formal events and galas

Conferences and networking events

Weddings

Corporate entertaining

Awards ceremonies and launch parties

Filming & photography

AGMs & other meetings

Trade shows

Exhibitions & bespoke entertainment events

Layout Options

Cocktail: high tables, limited seating

Standing only: all furniture removed

Exhibition: trestle tables with two seats per table

Theatre: rows of seating

Equipment Hire (additional charges may apply)

Lectern

Microphones / PA system and audio equipment

Staging / Podiums

On-stage or freestanding TV screens

Data projector and screen

Presentation foyer screens

Pricing Breakdown*

Commercial / NFP

| | Day Rate | Commercial / NFP |
|-----------|-------------|-------------------|
| Mon-Thurs | Day Rate | \$1,100 / \$705 |
| | 4-Hour Rate | \$815 / \$530 |
| Fri-Sun | Day Rate | \$1,970 / \$1,320 |
| | 4-Hour Rate | \$1,015 / \$910 |

Each per day hire of the Foyer includes exclusive of the Foyer and venue Wi-Fi. The Foyer will be set up in the default Cocktail Style, additional charges may apply to vary from this configuration.

Additional Costs to Consider*

Staffing (incl. technicians, duty managers, bar staff)

Food & beverage

Bespoke styling / set-up

Public holiday charges or additional staffing hours

***Please get in touch with The Pavilion team to receive full fees and charges package for foyer hire.**

Box Office



Foyer Bar



Merchandise Area

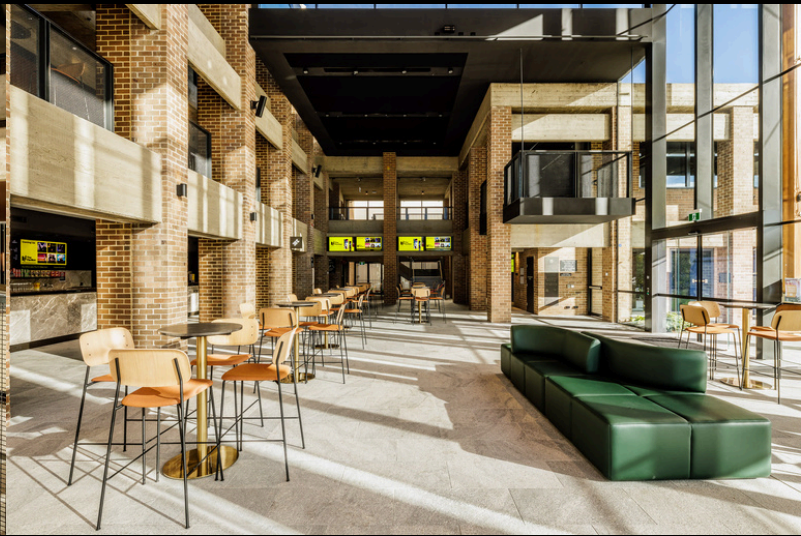


Foyer Images

Mezzanine View



Ground Floor



Bar Facilities



Foyer Seating



Cocktail Event



Bespoke Events



Terrace Bar



The Pavilion Menu
Please note we are a cashless bar

| | | |
|---|-------------------------------------|--|
| Sparkling and Champagne | Red Wines | Soft Drinks and Juice |
| Piper Heidsieck Champagne - France | Woodbrook Farm Shiraz, McLaren Vale | Coke Cola \$4.50 |
| Bottle \$110 Glass \$25 | Bottle \$40 Glass \$12 | Coke Cola No Sugar \$4.50 |
| Woodbrook Farm Shiraz, McLaren Vale | Woodbrook Farm Cabernet Sauvignon | Sprite \$4.50 |
| Bottle \$90 Glass \$25 | Bottle \$40 Glass \$12 | Fanta \$4.50 |
| York Pommery Blanc de Blancs | Rose Wines | Hotdog Juice \$5 |
| Bottle \$45 Glass \$14 | Langhorne Creek, Adelaide Hills | • Strawberry, Apple, Red Berries \$4 |
| White Wines | Langhorne Creek \$40 Glass \$14 | • Orange, Apple, Apple & Raspberry \$4 |
| Woodbrook Farm Chardonnay, McLaren Vale | Beers and Ciders | • Mixed Fruit Soft Drink \$4 |
| Bottle \$40 Glass \$12 | Coke \$12 | Snacks |
| Woodbrook Farm Shiraz, McLaren Vale | Carlsberg \$12 | French Fries \$5 |
| Bottle \$40 Glass \$12 | Bottled Apple Cider \$10 | Chicken McNuggets \$5 |
| Ready to Drink | House Made Lemonade \$8 | Life Sips \$5 |
| Stone Island \$12 | Ready to Drink | Chips \$5 |
| • Lemon & Lime \$12 | Stone Island \$12 | Chips \$5 |
| • Tropical \$12 | • Lemon & Lime \$12 | Chips \$5 |
| • Canadian Club \$12 | • Tropical \$12 | Chips \$5 |



Terrace Bar

Key Features

- Private bar on Level One with views over Peace Park
- Beautiful mezzanine with greenery and natural light
- Cocktail seating
- Private PA system
- Separate bar/food serving area

Capacity

Cocktail: 50-70

Ideal For

- Smaller events
- Networking drinks
- Birthdays / Parties
- Corporate entertaining
- Post-work drinks
- Christmas parties

Layout Options

- Cocktail: high tables, limited seating
- Standing only: all furniture removed

Equipment Hire (additional charges may apply)

- Microphones / PA system and audio equipment
- Bar screens
- Lectern

Pricing Breakdown*

| | | Commercial | NFP |
|-----------|-------------|------------|-------|
| Mon-Thurs | Day Rate | \$450 | \$350 |
| | 4-Hour Rate | \$300 | \$200 |
| Fri-Sun | Day Rate | \$585 | \$455 |
| | 4-Hour Rate | \$390 | \$260 |

Additional Costs to Consider*

- Staffing (incl. technicians, duty managers, bar staff)
- Food & Beverage
- Bespoke styling / set-up
- Public holiday charges or additional staffing hours

Private Bar



Cocktail Seating



View over Peace Park



Black Box



BLACK BOX

Black Box Meeting Room

Key Features

Fantastic conference/meeting room in prime central location in Sutherland

Room Dimensions: 7.2m x 10.2m

Ground Floor Access through main foyer

Fully enclosed space with blackout shades for privacy

Inbuilt projector with screen and audio (plug and play)

Capacity

Cocktail: 30-40

Seated: Up to 40

Ideal For

Meetings

Seminars / Workshops

Casual corporate events

Auctions

Staff training sessions

Additional Event Space

Layout Options

Cocktail: high tables, limited seating

Standing only: all furniture removed

Exhibition: trestle tables with two seats per tables

Theatre: rows of seating

Classroom or Cabaret: separated tables/chairs

U-Shaped: U-shaped arrangement with tables/chairs

Board Room: large singular table arrangement

Equipment Hire (additional charges may apply)

Lectern

Microphones / PA system and audio equipment

Staging / Podiums

On-stage or freestanding TV screens

Additional Presentation screens

Pricing Breakdown*

Commercial / NFP

| | | |
|-----------|-------------|---------------|
| Mon-Thurs | Day Rate | \$712 / \$460 |
| | 4-Hour Rate | \$535 / \$340 |
| Fri-Sun | Day Rate | \$712 / \$565 |
| | 4-Hour Rate | \$670 / \$425 |

Each hire of The Black Box includes exclusive use of the room, as well as the PA System, Projector and Screen and Venue Wi-Fi. The Black Box will be set up in the default position of Theatre Style with 40 seats.

Additional Costs to Consider*

Staffing (incl. technicians, duty managers, bar staff)

Food & beverage

Bespoke styling / set-up

Public holiday charges or additional staffing hours

***Please get in touch with The Pavilion team to receive full fees and charges package for Black Box hire.**

Cocktail Seating



Ground Floor Access



Theatre Styled Seating



Encore Room



Encore Room

Key Features

State of the art creative space

Room Dimensions: 9.9m x 9.6m

Equipped with sprung hardwood dance floors

Ballet bar with one wall lined with floor to ceiling mirrors

Natural light and closed blind options

Inbuilt projector with screen and audio (plug and play)

Capacity

Cocktail: 30-40

Seated: Up to 75

Ideal For

Dance rehearsals/classes

Exercise classes i.e. Yoga, Physio

Creative rehearsal space

Seminars / Workshops

Casual corporate events

Auctions

Staff training sessions

Webinar Hosting

Layout Options

Cocktail: high tables, limited seating

Standing only: all furniture removed

Exhibition: trestle tables with two seats per tables

Theatre: rows of seating

Classroom or Cabaret: separated tables/chairs

U-Shaped: U-shaped arrangement with tables/chairs

Board Room: large singular table arrangement

Equipment Hire (additional charges may apply)

Lecturn

Microphones / PA system and audio equipment

Staging / Podiums

On-stage or freestanding TV screens

Data projector and screen

Presentation foyer screens

Pricing Breakdown

Commercial / NFP

| | | |
|---------|-------------|---------------|
| Mon-Fri | Day Rate | \$712 / \$460 |
| | 4-Hour Rate | \$535 / \$340 |
| Sat-Sun | Day Rate | \$712 / \$565 |
| | 4-Hour Rate | \$670 / \$425 |

Each hire of The Encore Room includes exclusive use of the room, as well as the PA System, Projector and Screen and Venue Wi-Fi.

Additional Costs to Consider*

Staffing (incl. technicians, duty managers)

Bespoke styling / set-up

Public holiday charges or additional staffing hours

***Please get in touch with The Pavilion team to receive full fees and charges package for Black Box hire.**



Sutherland Arts Theatre



Sutherland Arts Theatre

Please note that Sutherland Arts Theatre is located at a different site at 25 East Parade, Sutherland.

Key Features

- Heritage community theatre recently renovated
- Boutique layout perfect for intimate events/shows
- Flexible seating arrangements
- Fully operational bar and foyer area with natural light
- Spacious entertaining outdoor deck with additional seating
- Private Box Office and welcome area
- Separate kitchenette / food serving area
- AV, staging and display options
- Two dressing rooms and one large orchestra room
- Orchestra pit for up to 8 musicians
- Foyer display screens (USB plug-in)
- LED fixtures

Capacity

Auditorium
Theatre Mode: 160
Standing: 180
Cabaret: 96

Foyer/Bar/Outdoor:
Cocktail: 50-70
Standing: 70-90

Ideal For

- Smaller shows / Concerts / Film Screenings
- Cabaret events
- Conferences and networking events
- Corporate entertaining

Awards ceremonies and launch parties

Filming & photography

AGMs & other meetings

Trade shows

Exhibitions & bespoke entertainment events

Equipment Hire (additional charges may apply)

Lectern

Microphones / PA system and audio equipment

Staging / Podiums

Data projector and screen

Download full Sutherland Arts Theatre tech specs here.

Pricing Breakdown*

Commercial / NFP

| All Days | Day Rate | \$635 / \$330 |
|----------|----------|---------------|
|----------|----------|---------------|

Each hire of the Sutherland Arts Theatre includes the exclusive use of the Auditorium, Foyer, Bar Areas, Dressing Rooms, Orchestra Pit. Price for a full day hire includes 1x Duty Manager with 5 hours of support.

Additional Costs to Consider*

Staffing (incl. technicians, duty managers)

Food & Beverage

Bespoke styling / set-up

Public holiday charges or additional staffing hours

***Please get in touch with The Pavilion team to receive full fees and charges package for Sutherland Arts Theatre hire.**



Sutherland Arts Theatre Images

Building Exterior



Box Office / Main Foyer



Main Bar



Outdoor Area



Auditorium



Auditorium - Cabaret Seating



Ready to make a booking?
Contact our helpful team and get
your event in the diary today.

For all venue hire enquiries or technical specs, contact:

E - info@thepavilionarts.au

P - 02 9063 2007

